

# exhibitor catalog

- furnishings
- carpet
- drape
- custom rental exhibits

# prestige

## computer pedestals

### Prestige computer pedestal

Our cleverly designed pedestal features an integrated cord management system that conceals wires and cables. The 36" wide x 18" deep roomy work space is complimented by a 20" diameter round shelf for your monitor, with a neatly tucked away CPU storage shelf.

The final touch is a four -outlet surge protector hidden under the workstation. The pedestal is offered in maple, cherry or frosted acrylic, with a powder coated black base. Computer not included.



# prestige

## furnishings



### One stop shopping

*In addition to our wide range of services, Champion also offers two complete lines of furniture, carpet, and accessories.*

*Our Prestige line offers you a distinctive and attractive look, while our standard line is functional, versatile, and of course slightly more economical.*

*Whatever your choice, we guarantee you can outfit your entire booth with quality and attractive furnishings.*

- A.** prestige maple computer pedestal
- B.** prestige frosted acrylic computer pedestal
- C.** prestige cherry computer pedestal
- D.** prestige bar stool (sand w/ black diamond point)
- E.** prestige side chair (black)
- F.** prestige arm chair (black)
- G.** prestige arm chair (grey)
- H.** prestige side chair (grey)
- I.** prestige conference table (42" dia. x 30"h)



# standard furnishings

**Classic styling, versatile and simple.**

**J.** standard bar stool

**K.** standard arm chair

**L.** standard side chair

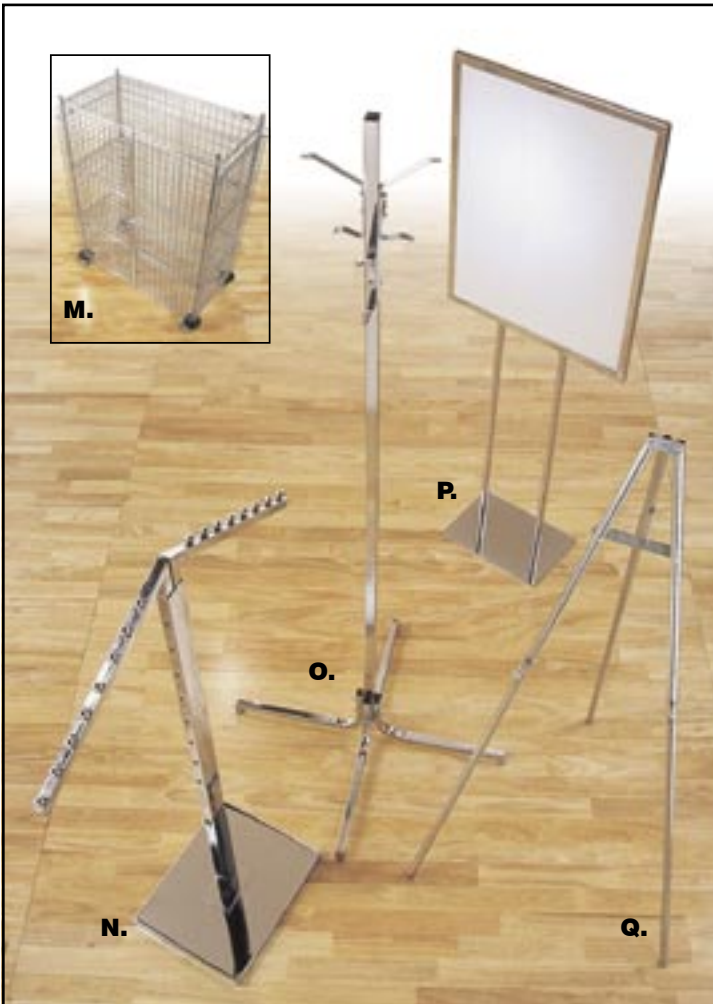


# standard accessories



**R.**

- M.** security container
- N.** chrome bag stand
- O.** clothes tree
- P.** 22" x 28" chrome sign stand
- Q.** aluminum easel
- R.** 4' x 8' display board
- S.** stanchion (pictured with chain)
- T.** literature stand
- U.** raffle drum



**M.**

**P.**

**O.**

**N.**

**Q.**



**S.**

**T.**

**U.**

# draped tables

**Draped display tables, counters,  
and risers.**

*Please refer to our order page for a  
complete list of table sizes available.*



**draped display tables available in the following colors:**



royal blue

navy blue

red

white

gold

hunter green

seafoam

black

silver

dusty rose

burgundy

plum



**royal blue**



**red**



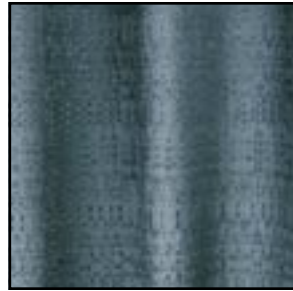
**white**



**gold**



**expo green**



**hunter green**



**seafoam**



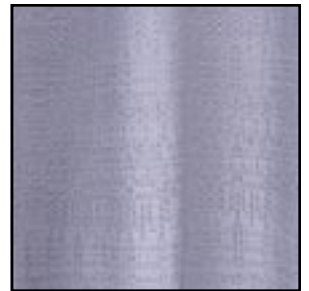
**light beige**



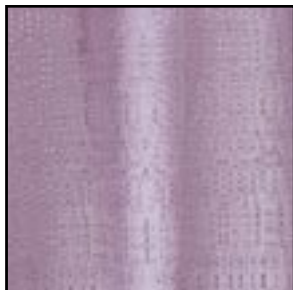
**peach**



**black**



**silver**



**dusty rose**



**burgundy**



**plum**

# **booth drape**

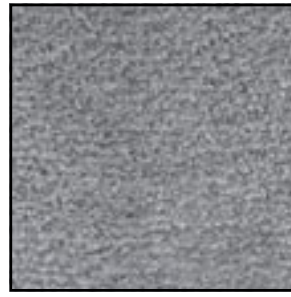
Color may vary due to facility lighting, printing limitations and dye lot differences.



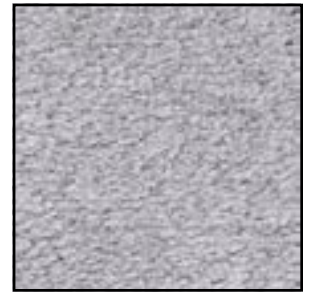
**emerald**



**red**



**charcoal**



**grey pearl**



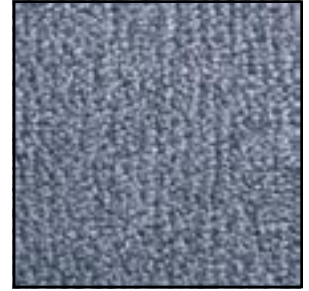
**plum**



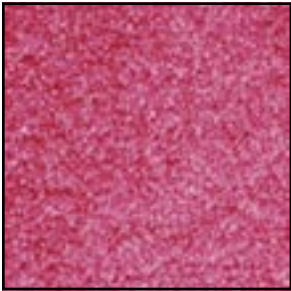
**silver cloud**



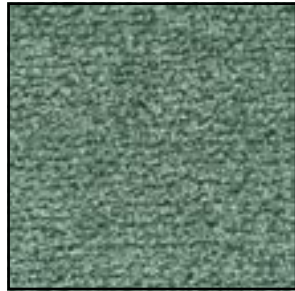
**blue mist**



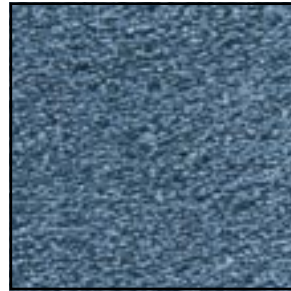
**colony blue**



**berry**



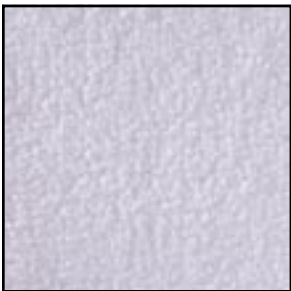
**peacock**



**navy**



**black**



**white**



**french beige**



**burgundy**



**creme**

# prestige

# 30oz.

anti-static carpet  
with Scotchguard™

*Splendidly thick and plush, our 30oz carpet adds comfort and pizzazz to your exhibit space. Select from one of sixteen colors with an additional 4mil poly covering to protect your carpet during the show move in.*

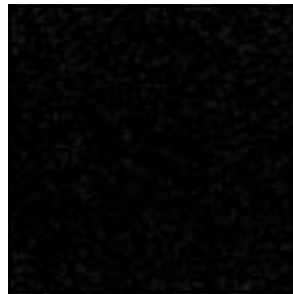
**& free poly covering**

# standard

16oz. carpet



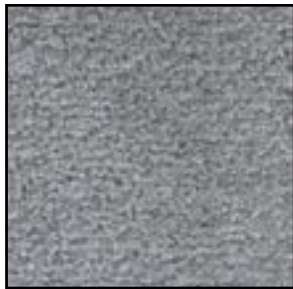
**blue**



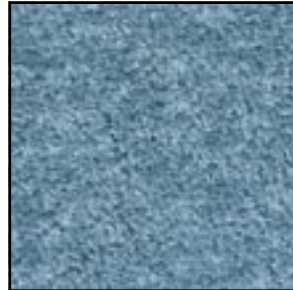
**black**



**burgundy**



**grey**



**seafoam**



**navy**



**red**



**green**



**plum**

# custom exhibits

## 10'x10' rental booths



*Our turnkey solution will save you time and money, and is guaranteed to be ready upon your arrival to your booth space.*

### **price package A**

- header sign (not backlit)
- standard color carpet
- track light with 1 head per panel (power not included)
- set and removal
- opening day cleaning

### **price package B**

- header sign (not backlit)
- standard color carpet
- track light with 1 head per panel (power not included)
- 40" h side returns
- (3) 12" flat shelves
- set and removal
- opening day cleaning



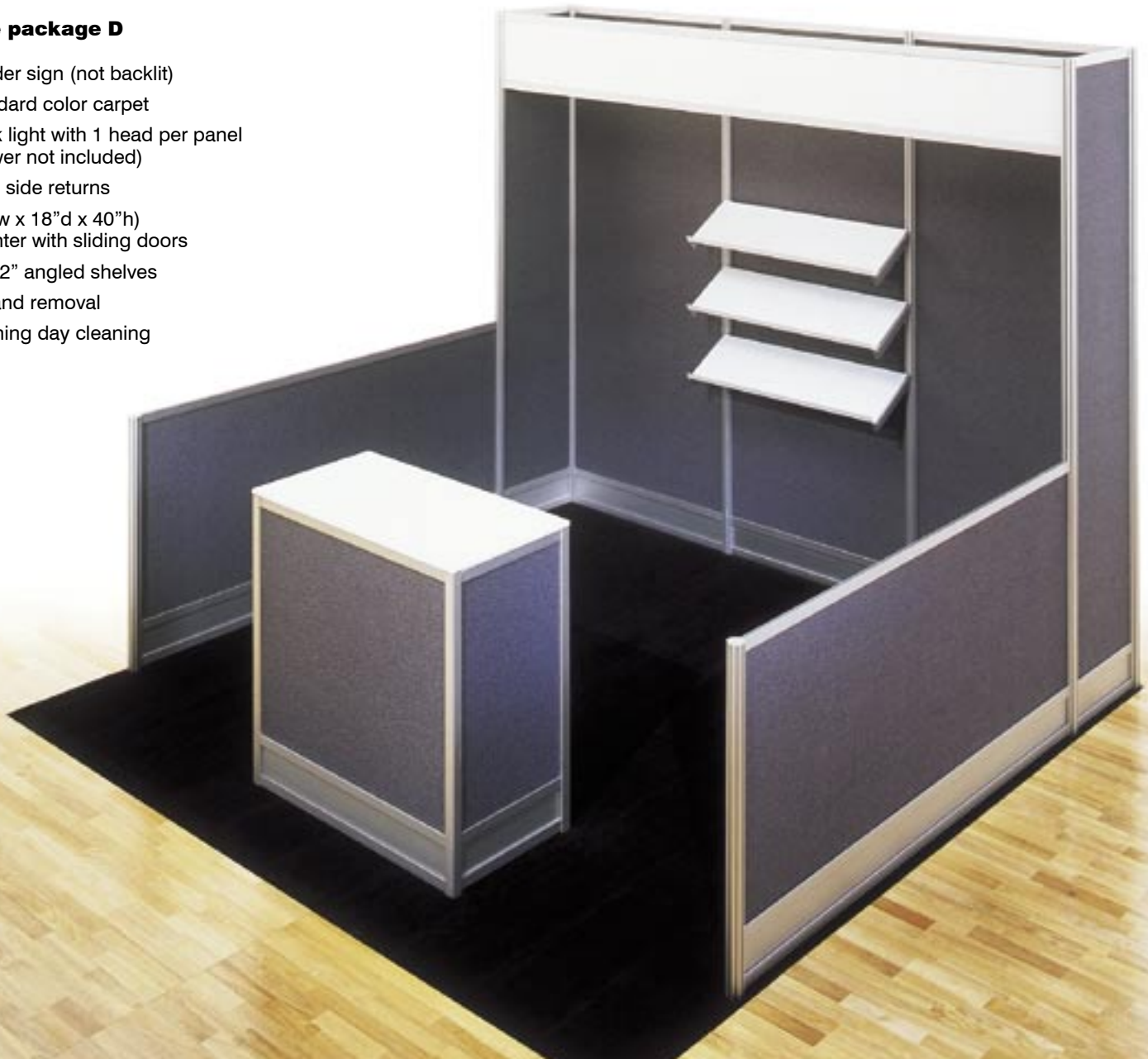


### **price package C**

- header sign (not backlit)
- standard color carpet
- track light with 1 head per panel (power not included)
- 40" h side returns
- (3) 12" angled shelves
- set and removal
- opening day cleaning

### **price package D**

- header sign (not backlit)
- standard color carpet
- track light with 1 head per panel (power not included)
- 40" h side returns
- (38" w x 18" d x 40" h) counter with sliding doors
- (3) 12" angled shelves
- set and removal
- opening day cleaning



# custom

# exhibits

## 10'x20' rental booths



### price package E

- header sign (not backlit)
- standard color carpet
- track light with 1 head per panel (power not included)
- 40" h side returns
- 2 (39" w x 18" d x 40" h) counters with sliding doors
- set and removal
- opening day cleaning

### price package F

- header sign (not backlit)
- standard color carpet
- track light with 1 head per panel (power not included)
- 40" h side returns
- (6) 12" flat shelves
- (1) storage closet
- set and removal
- opening day cleaning





**price package G**

- header sign (not backlit)
- standard color carpet
- track light with 1 head per panel (power not included)
- 40”h side returns
- (78”w x 40”d x 40”h) counter with sliding doors
- (5) 12” flat shelves
- 78” diagonal meeting area
- set and removal
- opening day cleaning

**price package H**

- header sign (not backlit)
- standard color carpet
- track light with 1 head per panel (power not included)
- 40”h side returns
- (78”w x 40”d x 40”h) counter with sliding doors
- (5) 12” flat shelves
- 78” diagonal meeting area
- set and removal
- opening day cleaning
- (4) prestige chairs
- prestige table (floral & A/V not included)

**panels available in these colors & materials**

**laminated panels**



white



grey



black

**fabric panels (velcro friendly)**



blue/grey



grey



black



# custom exhibits

## 20'x20' rental booths

### Let us help you!

*If you don't have the time, or you don't want the hassle, then rely on Champion to provide you with a custom rental exhibit.*

*If none of these designs catch your eye, simply give one of our professional designers a call to provide you with your own personalized design along with a price that fits your budget.*

*Dial 1.800.387.7469 and ask to speak to one of our custom exhibit representatives.*

#### price package I

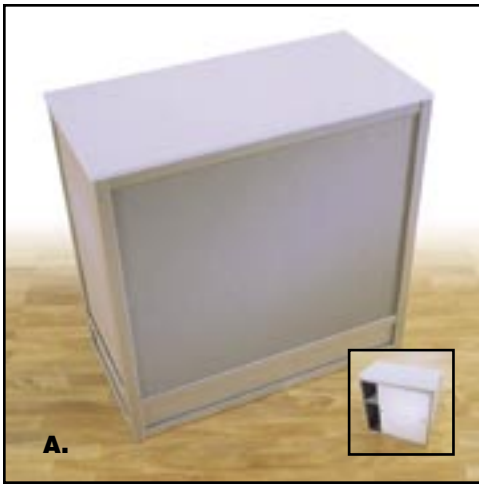
- header sign (not backlit)
- standard color carpet
- track light with 1 head per panel (power not included)
- set and removal
- opening day cleaning



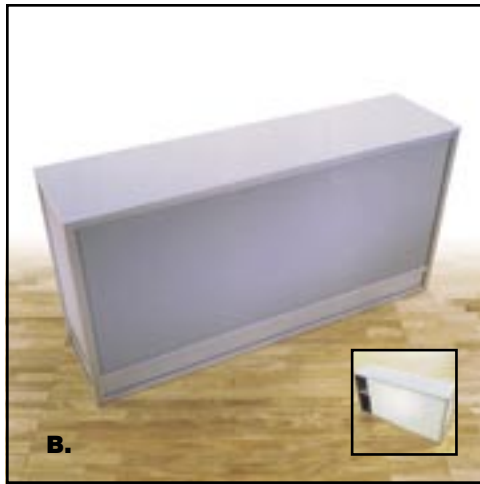
#### price package J

- header sign (not backlit)
- standard color carpet
- track light with 1 head per panel (power not included)
- (4) prestige chairs
- (1) prestige table
- (1) media rack
- set and removal
- opening day cleaning (floral & A/V not included)





**A.**



**B.**

*Enhance your display with functional and stylish accessories from Champion.*

**A.** 40”h x 39”w x 18”d counter

**B.** 40”h x 78”w x 18”d counter

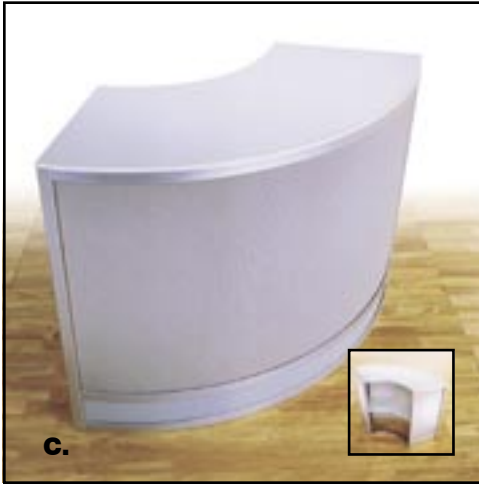
**C.** 40”h quarter round counter with shelf storage

**D.** 40”h quarter round counter with sliding door storage

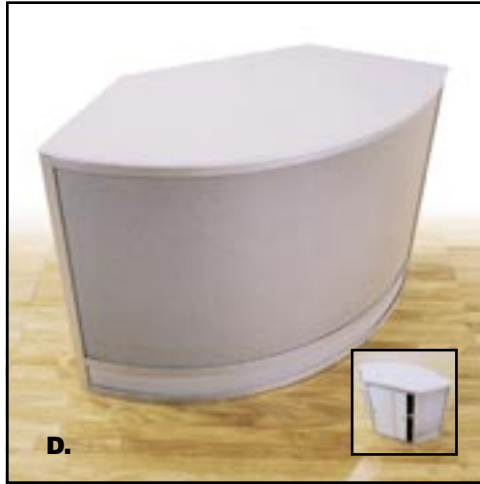
**E.** 40”h x 96”w x 43”d 45° counter

**F.** 40”h x 39”w x 18”d glass display counter

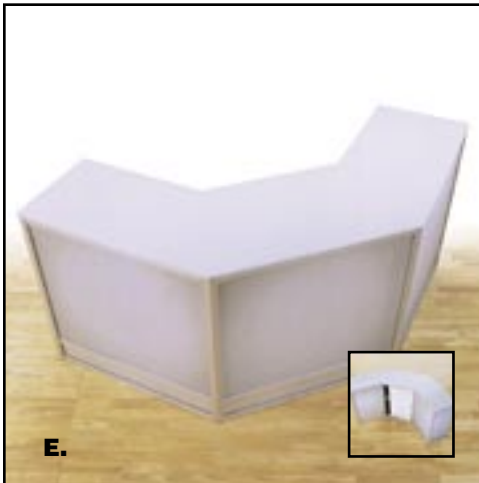
**G.** 40”h x 78”w x 18”d glass display counter



**C.**



**D.**



**E.**



**F.**



**G.**

# rental booth accessories

# rental booth accessories

- H.** black clip on spotlight
- I.** long arm spotlight
- J.** brochure holder (velcro adhesive)
- K.** 96" h x 39" w wire wall panel for attachments, or just for a unique look.
- L.** 96" h x 20" w x 20" d vertical display cabinet
- M.** 39" w x 12" d angled shelf
- N.** 39" w x 12" d flat shelf

